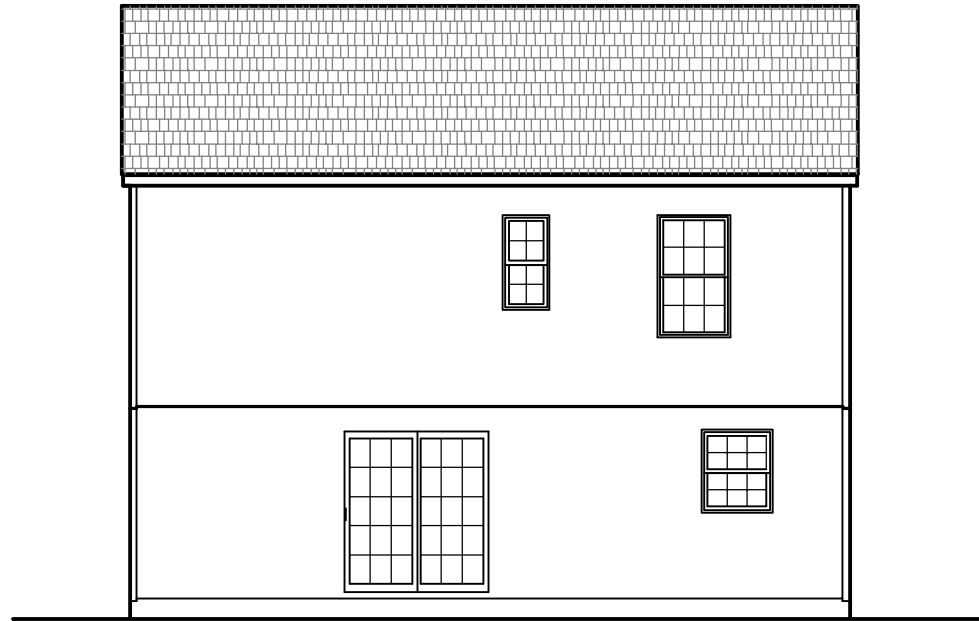


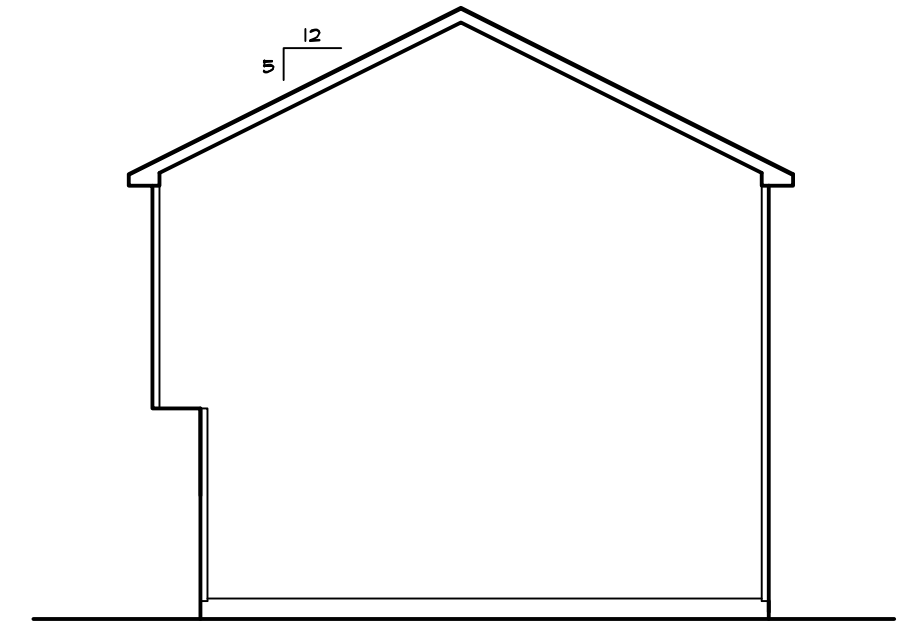
RIGHT SIDE ELEVATION

1/8"=1'-0"



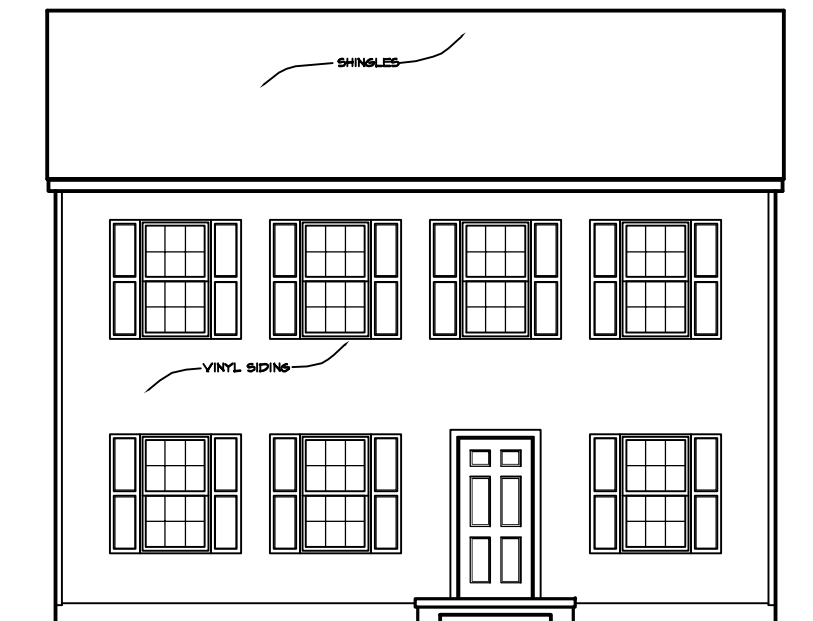
REAR ELEVATION

1/8"=1'-0"



LEFT SIDE ELEVATION

1/8"=1'-0"

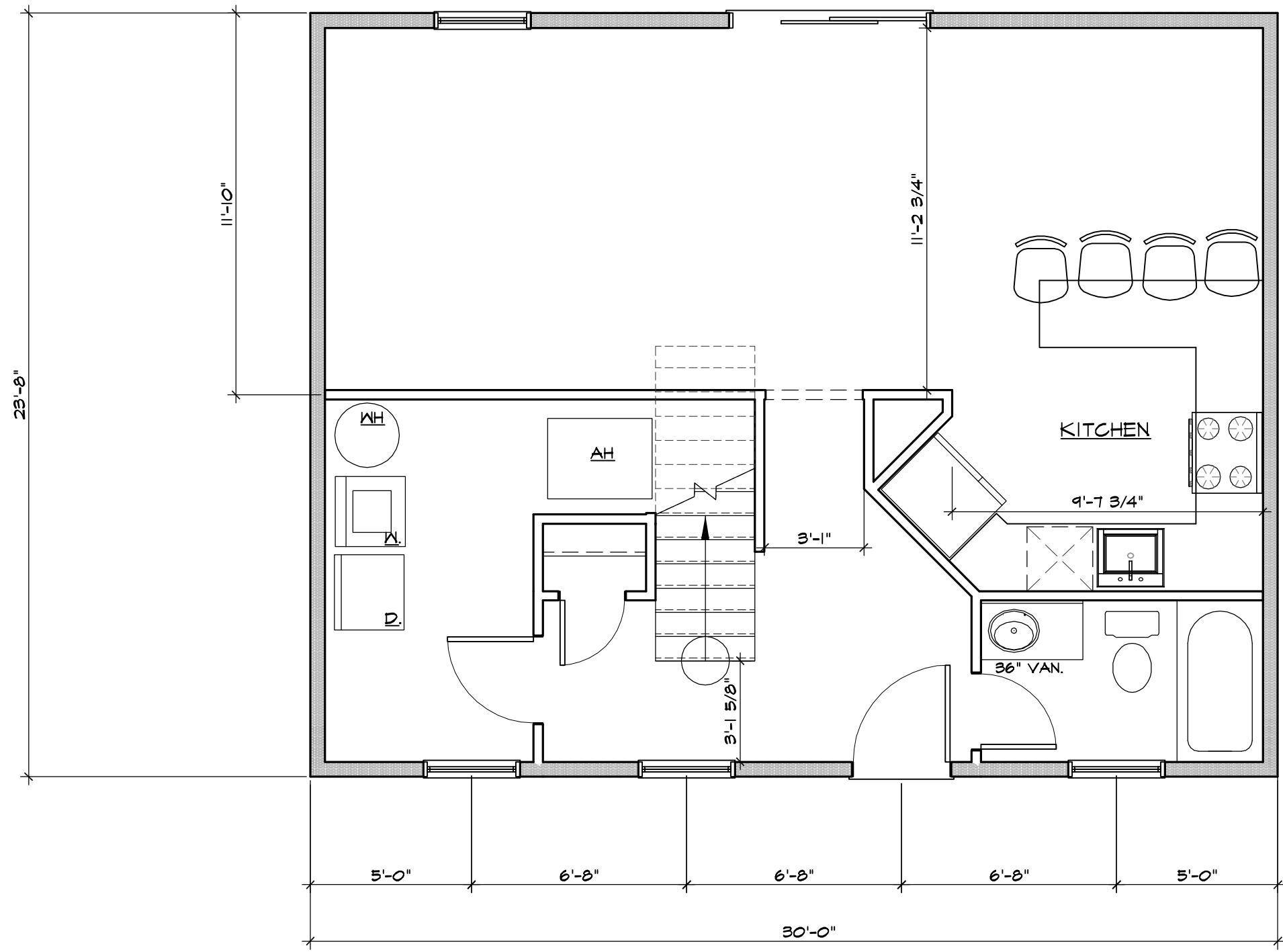


FRONT ELEVATION

1/8"=1'-0"

<b>30'x26' TWO STORY</b>		
<b>CRADLEPINE BUILDERS, LLC</b>		
SCALE 1/8"=1'-0"		DRAWN BY
DATE 11/21/09		REVISED
Donna Anastasi - CAD Drafting Service		
1818 Quebec Street, Severn, MD 21144		410-519-7200
<b>ELEVATIONS</b>		DRAWING NUMBER
		<b>A1 OF 5</b>

710 sf  
1480 sf  
total

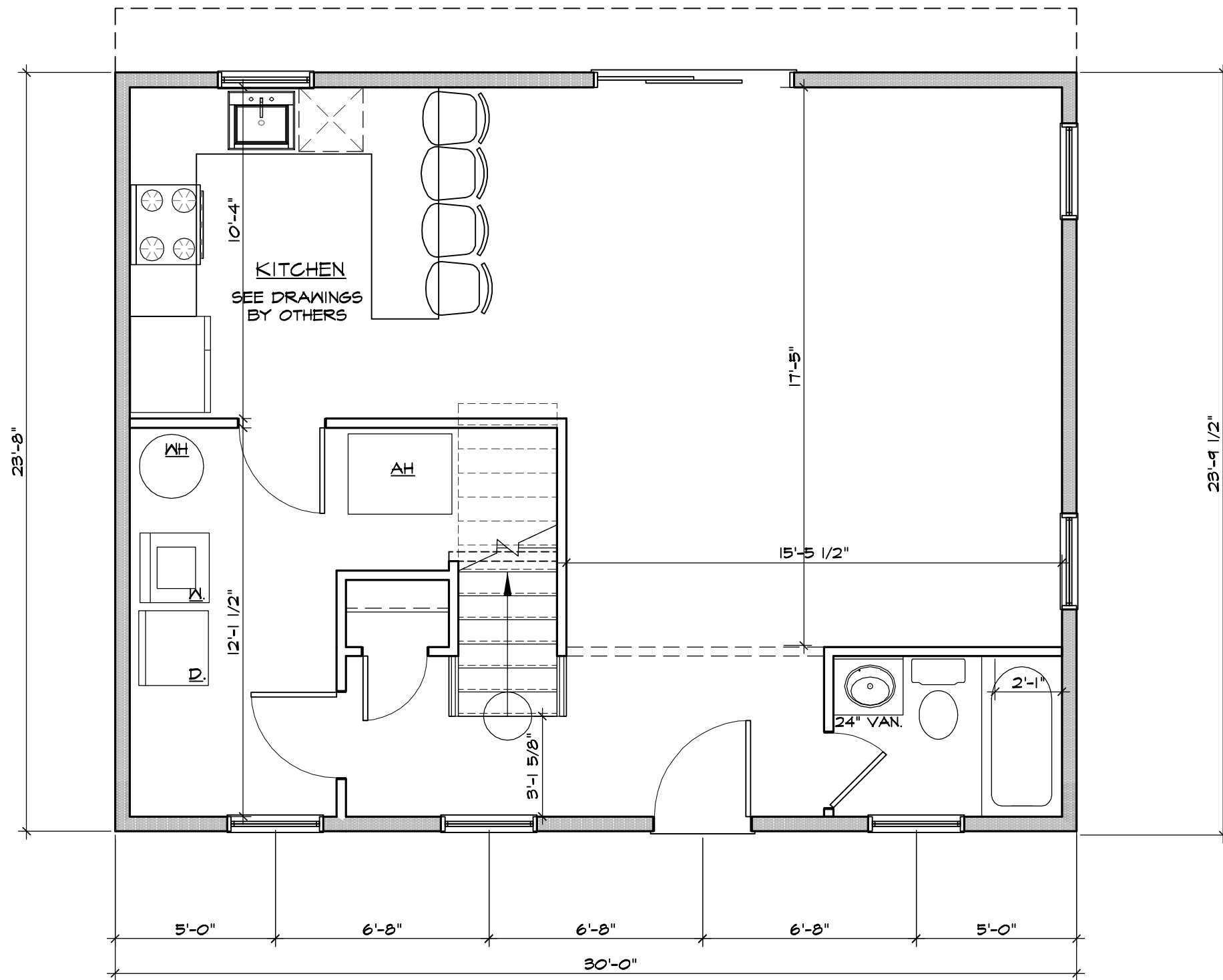


FIRST FLOOR PLAN

1/4"=1'-0"

<b>30'x26' TWO STORY</b>		
<b>CRADLEPINE BUILDERS, LLC</b>		
SCALE 1/4" = 1'-0"		DRAWN BY
DATE 11/21/09		REVISED
Donna Anastasi - CAD Drafting Service		
1818 Quebec Street, Severn, MD 21144		410-519-7200
<b>FLOOR PLAN</b>		DRAWING NUMBER <b>A2 OF 5</b>

710 sf  
 1480 sf  
 total

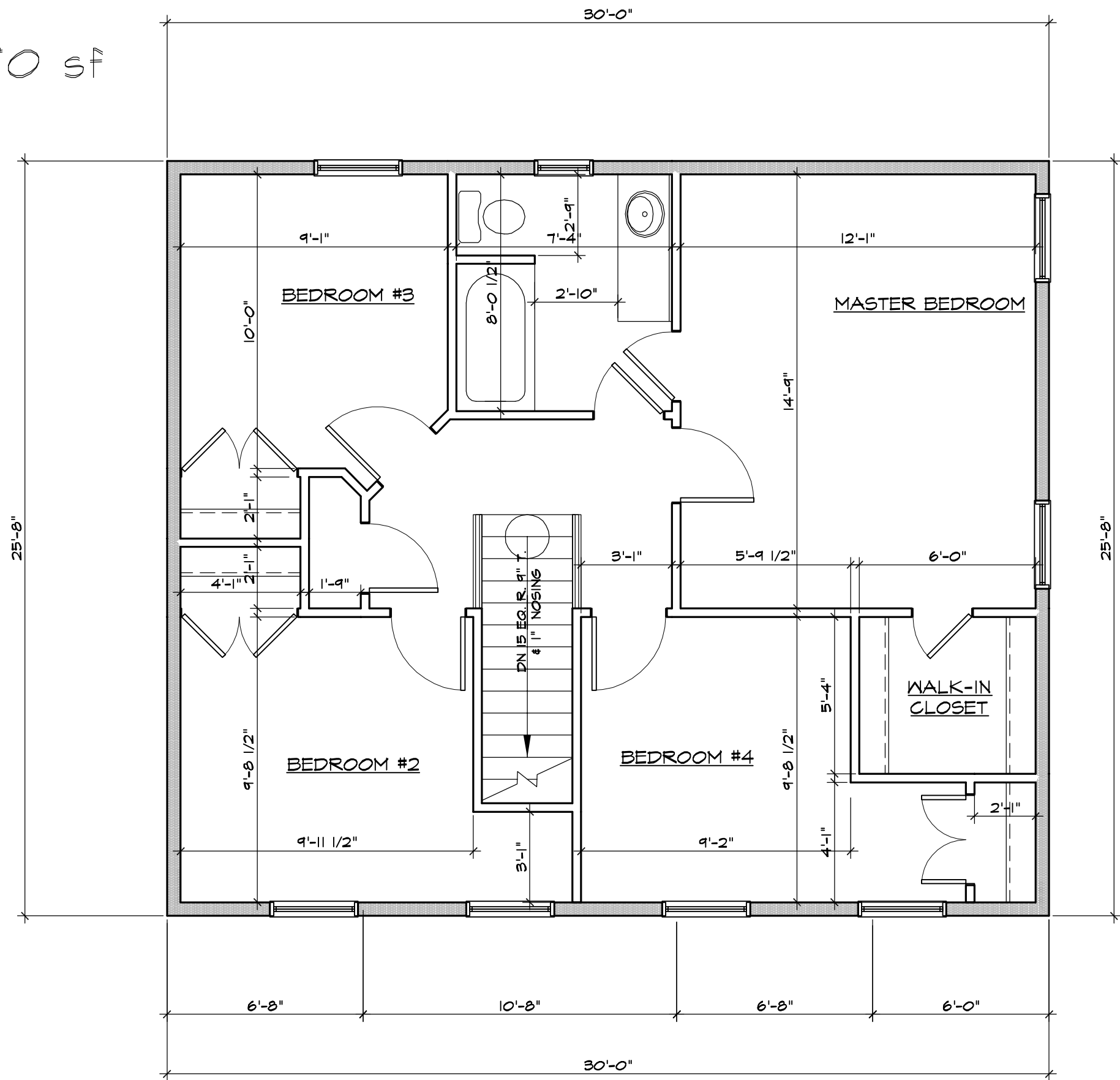


**FIRST FLOOR PLAN**

1/4"=1'-0"

<b>30'x26' TWO STORY</b>		
<b>CRADLEPINE BUILDERS, LLC</b>		
SCALE 1/4" = 1'-0"		DRAWN BY
DATE 11/21/09		REVISED
Donna Anastasi - CAD Drafting Service 1818 Quebec Street, Severn, MD 21144		410-519-7200
<b>FLOOR PLAN</b>		DRAWING NUMBER <b>A2 OF 5</b>

770 sf



**SECOND FLOOR PLAN**  
1/4"=1'-0"

<b>30'x26' TWO STORY</b>		
<b>CRADLEPINE BUILDERS, LLC</b>		
SCALE 1/4" = 1'-0"		DRAWN BY
DATE 11/21/09		REVISED
Donna Anastasi - CAD Drafting Service		
1818 Quebec Street, Severn, MD 21144		410-519-7200
<b>FLOOR PLAN</b>		DRAWING NUMBER
		<b>A3 OF 5</b>